

**Sinai
Health**

Healthy Ageing
and Geriatrics



UHN

Toronto General
Toronto Western
Princess Margaret
Toronto Rehab
Michener Institute

GERIATRICS INSTITUTE EDUCATION DAY

Applying COVID-19 Learnings To Transform The Future of Geriatric Care

**BACK
TO
THE FUTURE**

Thursday June 24, 2021

9:00 AM - 3:15 PM

LAND ACKNOWLEDGEMENT

The Dish With One Spoon is a treaty between the Anishinaabe, Mississaugas and Haudenosaunee that bound them to share the territory and protect the land. Subsequent Indigenous Nations and peoples, Europeans and all newcomers have been invited into this treaty in the spirit of peace, friendship and respect.

HEALTHY AGEING AND GERIATRICS PROGRAM VISION & MISSION

OUR VISION

Leading and innovating in the care of older persons to enable healthy ageing.

OUR MISSION

We are dedicated to the care of all older persons particularly the complex and frail. We provide interprofessional expertise, conduct research, implement innovative models of care, educate ourselves and others, and collaborate with all partners to enable healthy ageing.

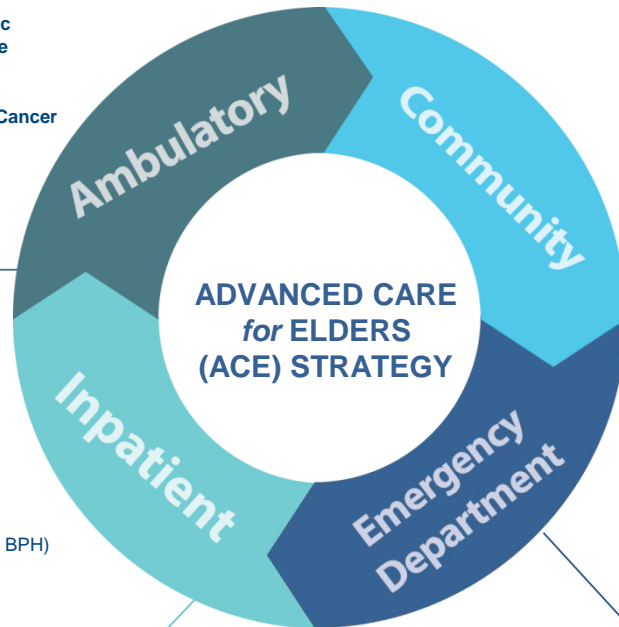
OUR GERIATRICS CONTINUUM OF CARE

OUTPATIENT MODELS

- Geriatric Medicine Clinics (MSH, TRI), Geriatric Psychiatry Clinics (MSH, TGH, TRI) & Palliative Medicine Clinics (PMCC, MSH)
- Memory Clinic (TWH), Falls Clinic (TRI), Osteoporosis Clinic (TGH), Older Adults and Cancer Clinic (PMCC), Mature Women's Clinic (MSH)
- Geriatric Telemedicine Clinics (MSH)
- Falls Prevention Program (TRI)
- Geriatric Day Hospital (TRI)

INPATIENT MODELS

- Geriatric Medicine, Geriatric Psychiatry & Palliative Medicine Consultation Services (UHN/SH)
- ACE Units (MSH, TWH)
- Orthogeriatrics Program (TWH/MSH)
- Intensive Care Unit Geriatrics Program (MSH)
- Hospital at Home Program (UHN/SH)
- MAUVE/Help Volunteer Programs (TWH, MSH, BPH)
- ACE Tracker (MSH)
- Safe Patients/Safe Staff (MSH)
- Specialized Dementia Care Unit (TRI)
- Geriatric Rehab (TRI), Long-Term Care (TRI) and Complex Continuing Care (TRI,BPH)
- Palliative Care Units (PMCC, BPH)



COMMUNITY MODELS

- House Calls Home-Based Geriatric Primary/Specialty Care Program (UHN/SH)
- Temmy Latner Home-Based Palliative Care Program (SH)
- Kensington Hospice (UHN)
- Integrated Client Care Program (TWH, MSH)
- Reitman Centre for Alzheimer's Support and Caregiver Training (MSH)
- Bitove Wellness Academy Dementia Day Program (UHN)
- Community and Staff Education Programs (UHN/SH)
- Community Paramedicine Program (SH)
- Long-Term Care Nurse-Led Outreach Team (NLOT) (TWH)
- Geriatric Mental Health Outreach Team (TWH)
- Geriatrics Community Outreach Team (UHN/SH)

EMERGENCY DEPARTMENT MODELS

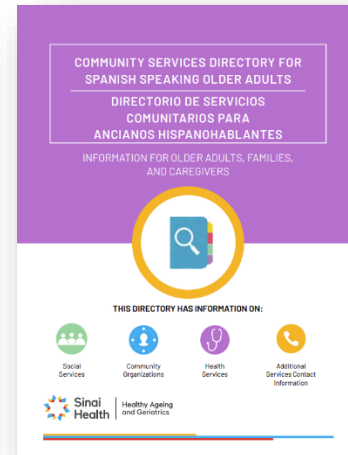
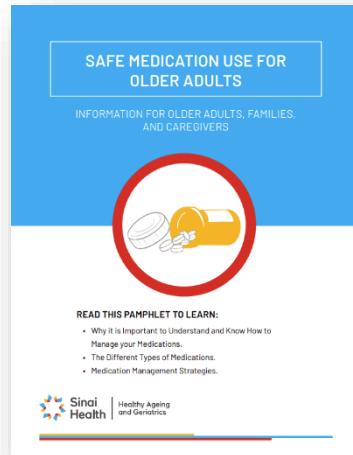
- ISAR Screening (TWH,TGH,MSH)
- Geriatric Emergency Management (GEM) Nurses (TWH,TGH,MSH)
- Geri-EM.com Staff Training Program (MSH)
- High-Risk Older Patient Email Notification System (MSH)

We are Canada's Largest Integrated Continuum of Geriatrics Care

HEALTH EDUCATION RESOURCES

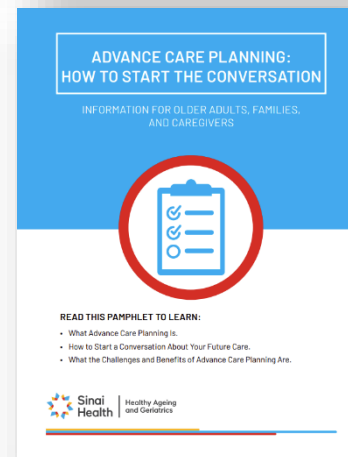
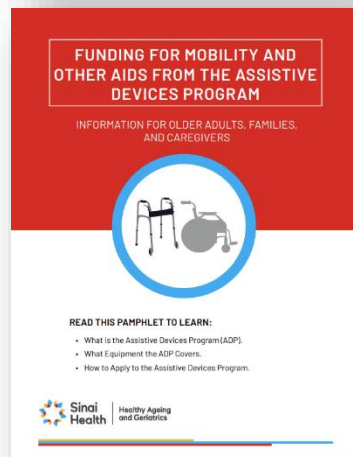
<https://sinaigeriatrics.ca/healtheducation/>

Promoting Health & Wellness
22 titles



Diversity & Ageing
10 titles

Community Supports & Services
7 titles



Planning Your Care
3 titles

Stay Connected With Us

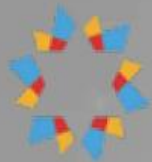


Sign up for our newsletter at
sinaigeriatrics.ca/subscribe

Follow us on  **@SinaiGeriatrics**

Tweet today using **#GerInstitute2021**

Visit our Website **www.sinaigeriatrics.ca**



**Sinai
Health**

Healthy Ageing
and Geriatrics



UHN

Toronto General
Toronto Western
Princess Margaret
Toronto Rehab
Michener Institute

GERIATRICS INSTITUTE EDUCATION DAY

Applying COVID-19 Learnings To Transform The Future of Geriatric Care

**BACK
TO
THE FUTURE**

Thursday June 24, 2021

9:00 AM - 3:15 PM

Welcome to our
500 Participants!

from

Canada
USA

AND South Korea!



2021 GERIATRICS INSTITUTE EDUCATION DAY

THURSDAY JUNE 24, 2021

Applying COVID-19 Learnings To Transform The Future of Geriatric Care

9:00 AM - 9:10 AM OPENING REMARKS

Dr. Samir Sinha, Director of Geriatrics, Sinai Health and University Health Network

9:10 AM - 10:00 AM What has the COVID-19 Pandemic Taught Us about the Future for Caring for Older Canadians

Dr. Samir Sinha, Director of Geriatrics, Sinai Health and University Health Network

Dr. Nathan Stall, Geriatrician, Sinai Health and University Health Network

10:00 AM - 10:45 AM Caregivers' Perspective on Being #notjustavisitor

Susan Mills, Caregiver and Advocate

Donna Thomson, Caregiver, Author and Activist

10:45 AM - 11:00 AM BREAK

11:00 AM - 11:45 AM Addressing Health Equity and Diversity Issues in Better Caring for Older Adults

Dr. Kwame McKenzie, CEO, Wellesley Institute

Dr. Seong-gee Um, Researcher, Wellesley Institute

11:45 AM - 12:30 PM Making our Mental Health and Wellbeing A Priority

Dr. Benjamin Rosen, Psychiatrist and Resiliency Coach, Sinai Health

Dr. Mary Preisman, Psychiatrist, Sinai Health

12:30 PM - 1:30 PM LUNCH / Thematic Breakout Rooms for Networking

1:30 PM - 2:15 PM Providing Excellent Care in the Absence of Family Presence

Rebecca Lemieux, Clinical Nurse Specialist, Sinai Health

2:15 PM - 3:00 PM Ageing & Dying on the Streets: Supporting the Palliative Care Needs of Older Adults Experiencing Homelessness

Dr. Naheed Dosani, Palliative Care Physician, Founder of PEACH

3:00 PM - 3:15 PM CLOSING REMARKS

Dr. Samir Sinha, Director of Geriatrics, Sinai Health and University Health Network

PARTICIPANT TIPS FOR TODAY!

- Make sure you are muted while during the presentations!
- **Q&A:**
 - Raise your hand (in the Reactions Menu) to ask a question live, wait to be invited to speak and remember to mute yourself after
 - OR, submit your question to the chat box for the moderator to read out
- You will have the option to join a Breakout Room of your choosing at 12:30 PM (with 5 minute delayed start)
- If you are not joining a Breakout Room, DO NOT LOG OFF. Stay in the main room and we will resume at 1:30 PM
- **If the event crashes, we will restart it and everyone will need to join again using the login information you already have**

Lunchtime Breakout Rooms (12:30 – 1:30 PM)

1. Acute Care Networking
2. Community Care & Supports Networking #1
3. Community Care & Supports Networking #2
4. Dementia Care Networking
5. Family Caregiver Networking
6. Long Term Care Networking
7. Older Adult Networking

Lunchtime Breakout Rooms

(12:30 – 1:30 PM)

- If you choose not to join a room, DO NOT LOG OFF. You will stay in the main room, and we will reconvene at 1:30 PM
- Breakout Rooms are NOT RECORDED
- Each Breakout Room has a facilitator and a designated support person
- If you are having trouble joining a room, please send a direct message to Megan Acton or Elsa Nana Nzepa (through the chat box)

Every Institute Begins With a Case...



Back To The Future : Applying COVID-19 Learnings To Transform The Future of Geriatric Care