



2020 SHS/UHN COVID-19 SPECIAL
GERIATRICS INSTITUTE EDUCATION DAY

A Whole New World.....

Healthcare Transformation in A Time of Uncertainty:
What COVID-19 Now Means For Us

THURSDAY JUNE 25, 2020
9:00 AM - 2:30 PM



1000 of You from All Over The World!

5 Provinces
in Canada

Kenya



2 States in the
USA

Ecuador

WE ARE HOSTING OUR DAY FROM THE DISH WITH ONE SPOON TERRITORY

The Dish With One Spoon is a treaty between the Anishinaabe, Mississaugas and Haudenosaunee that bound them to share the territory and protect the land. Subsequent Indigenous Nations and peoples, Europeans and all newcomers have been invited into this treaty in the spirit of peace, friendship and respect.



Sinai Health System

HEALTHY AGEING AND GERIATRICS



UHN

Toronto General
Toronto Western
Princess Margaret
Toronto Rehab

THANK YOU TO OUR SPONSORS:



PHILIPS
Lifeline





2020 SHS/UHN COVID-19 SPECIAL GERIATRICS INSTITUTE EDUCATION DAY

THURSDAY JUNE 25, 2020



Healthcare Transformation in a Time of Uncertainty:
What COVID-19 Now Means For Us

9:00 AM – 9:10 AM	<p>OPENING REMARKS</p> <p>Dr. Barry Goldlist, Geriatrician, Sinai Health and University Health Network</p>	11:20 AM – 12:00 PM	<p>ADDRESSING AND PREVENTING ELDER ABUSE DURING A PANDEMIC</p> <p>Raeann Rideout, Director Provincial Partnerships & Outreach, Elder Abuse Prevention Ontario</p>
9:10 AM – 9:50 AM	<p>A WHOLE NEW WORLD..... HEALTHCARE TRANSFORMATION IN A TIME OF UNCERTAINTY: WHAT COVID-19 NOW MEANS FOR US</p> <p>Dr. Samir Sinha, Director of Geriatrics, Sinai Health and University Health Network</p>	12:00 PM – 1:00 PM	<p>LUNCH / VIRTUAL COMMUNITY BOOTH PRESENTATIONS</p>
9:50 AM – 10:30 AM	<p>HOUSE CALLS: DELIVERING EXCEPTIONAL CARE TO HOMEBOUND SENIORS DURING A PANDEMIC</p> <p>Leslie Coulter, Occupational Therapist, SPRINT Senior Care, House Calls Program</p> <p>Dr. Christa Sinclair, Physician, SPRINT Senior Care, House Calls Program</p>	1:00 PM – 1:40 PM	<p>LESSONS LEARNED IN PROVIDING EFFECTIVE CARE FOR OLDER RESIDENTS IN LONG TERM CARE HOMES AFFECTED BY COVID-19</p> <p>Dr. Nathan Stall, Geriatrician, Sinai Health and University Health Network</p>
10:30 AM – 10:40 AM	<p>BREAK</p>	1:40 PM – 2:20 PM	<p>GRAPPLING WITH PROVIDING HUMANE AND ETHICAL CARE IN THE MIDST OF A PANDEMIC</p> <p>Kevin Rodrigues, Bioethicist, University Health Network</p>
10:40 AM – 11:20 AM	<p>CARING FOR CARERS: SUPPORTING THE MENTAL HEALTH NEEDS OF CARE PROVIDERS AND CAREGIVERS IN LIGHT OF COVID-19</p> <p>Dr. Irina Nica-Graham, Geriatric Psychiatrist, Sinai Health</p> <p>Gita Lakhanpal, Occupational Therapist, Registered Psychotherapist, Reitman Centre – Sinai Health</p>	2:20 PM – 2:30 PM	<p>CLOSING REMARKS</p> <p>Dr. Samir Sinha, Director of Geriatrics, Sinai Health and University Health Network</p>

THANK YOU TO OUR SPONSORS:



LUNCH TIME VIRTUAL COMMUNITY BOOTH PRESENTATIONS

- Mosaic Home Care (12:10 p.m.)
- Philips Lifeline (12:15 p.m.)
- VHA Home HealthCare (12:20 p.m.)
- Home Instead Senior Care (12:25 p.m.)
- Canadian Hearing Services (12:30 p.m.)
- Hospice Palliative Care Ontario (12:35 p.m.)
- Reitman Centre (12:40 p.m.)
- Alzheimer Society Toronto (12:45 p.m.)

ZOOM WEBINAR TIPS FOR TODAY

Q&A Feature:

Use this option at the bottom of your screen to send questions to panelists during their presentations.

Chat Feature:

Use this option at the bottom of your screen technical questions to the hosts.

If our event crashes, we will restart the Webinar and everyone will need to log back in with the same login you initially used.

To keep up to date on future events:

Sign up for our newsletter at
sinaigeriatrics.ca/subscribe

Follow us on  @SinaiGeriatrics

Tweet today using **#Gerilnstitute2020**

Every Education Day Begins with A Story...



A Whole New World...
**Healthcare Transformation in a Time of Uncertainty:
What COVID-19 Now Means For Us**



HEALTHY AGEING AND GERIATRICS PROGRAM VISION & MISSION

GERIATRICS PROGRAM VISION

Leading and innovating in the care of older persons to enable healthy ageing.

GERIATRICS PROGRAM MISSION

We are dedicated to the care of all older persons particularly the complex and frail. We provide interprofessional expertise, conduct research, implement innovative models of care, educate ourselves and others, and collaborate with all partners to enable healthy ageing.



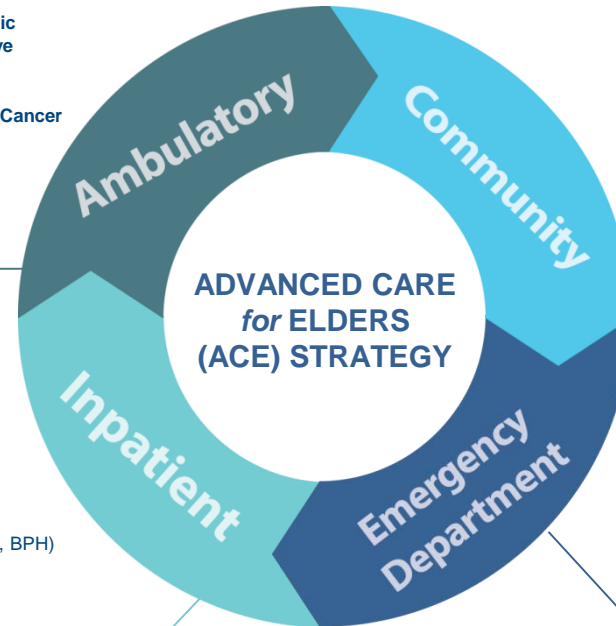
THE SHS/UHN GERIATRICS CONTINUUM

OUTPATIENT MODELS

- Geriatric Medicine Clinics (MSH, TRI), Geriatric Psychiatry Clinics (MSH, TGH, TRI) & Palliative Medicine Clinics (PMCC, MSH)
- Memory Clinic (TWH), Falls Clinic (TRI), Osteoporosis Clinic (TGH), Older Adults and Cancer Clinic (PMCC), Mature Women's Clinic (MSH)
- Geriatric Telemedicine Clinics (MSH)
- Falls Prevention Program (TRI)
- Geriatric Day Hospital (TRI)

INPATIENT MODELS

- Geriatric Medicine, Geriatric Psychiatry & Palliative Medicine Consultation Services (UHN/SHS)
- ACE Units (MSH, TWH)
- Orthogeriatrics Program (TWH/MSH)
- Intensive Care Unit Geriatrics Program (MSH)
- Hospital at Home Program (UHN/SHS)
- MAUVE/Help Volunteer Programs (TWH, MSH, BPH)
- ACE Tracker (MSH)
- Safe Patients/Safe Staff (MSH)
- Specialized Dementia Care Unit (TRI)
- Geriatric Rehab (TRI), Long-Term Care (TRI) and Complex Continuing Care (TRI,BPH)
- Palliative Care Units (PMCC, BPH)



COMMUNITY MODELS

- House Calls Home-Based Geriatric Primary/Specialty Care Program (UHN/SHS)
- Temmy Latner Home-Based Palliative Care Program (SHS)
- Kensington Hospice (UHN)
- Integrated Client Care Program (TWH, MSH)
- Reitman Centre for Alzheimer's Support and Caregiver Training (MSH)
- Bitove Wellness Academy Dementia Day Program (UHN)
- Community and Staff Education Programs (UHN/SHS)
- Community Paramedicine Program (SHS)
- Long-Term Care Nurse-Led Outreach Team (NLOT) (TWH)
- Geriatric Mental Health Outreach Team (TWH)
- Geriatrics Community Outreach Team (UHN/SHS)

EMERGENCY DEPARTMENT MODELS

- ISAR Screening (TWH,TGH,MSH)
- Geriatric Emergency Management (GEM) Nurses (TWH,TGH,MSH)
- Geri-EM.com Staff Training Program (MSH)
- High-Risk Older Patient Email Notification System (MSH)

We are Canada's Largest Integrated Continuum of Geriatrics Care



Ontario Geriatrics Learning Centre

On-demand access to an eLearning series of video presentations key issues in geriatric care – delivered by experts in the field.

Expand Your Knowledge

Watch high-quality lectures, covering a range of topics within three knowledge categories.

Learn Best Practices

Access educational resources supplied by the province's foremost experts in geriatric care.

Understand Emerging Trends

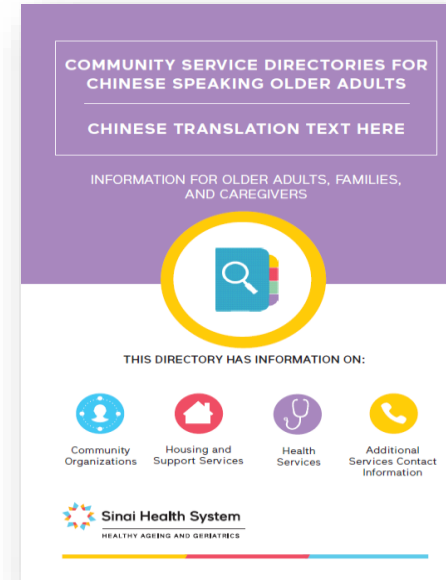
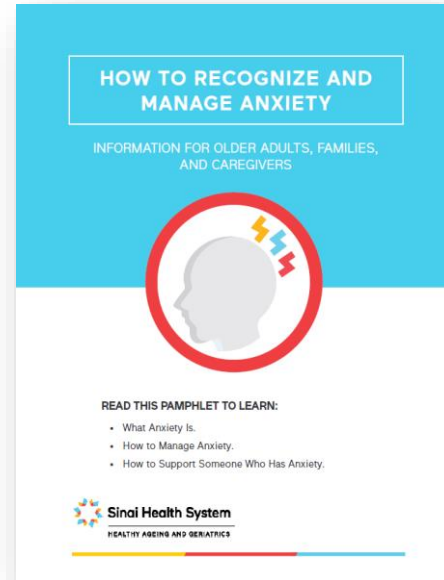
Receive the latest information on geriatric care so you can better care for your patients.

Visit geriatrics.otn.ca today

HEALTH EDUCATION RESOURCES

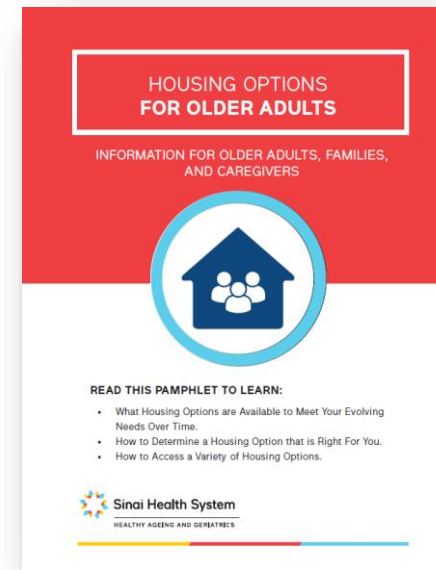
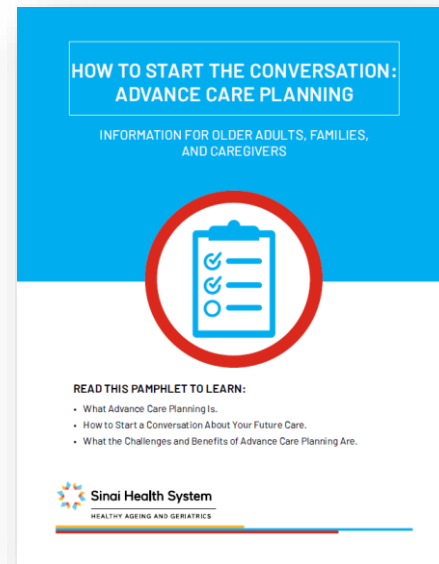
<https://sinaigeriatrics.ca/healtheducation/>

**Promoting Health
+ Wellness**
14 titles



**Diversity +
Ageing**
10 titles

Planning Your Care
3 titles



**Community
Supports +
Services**
6 titles